

JEFFERSON EDUCATIONAL SOCIETY 2020-2021 MEMBERSHIP FORM

If you would like to become a member of the Jefferson Educational Society, go on-line to www.jeserie.org
or please fill out the form below and mail directly to:

JEFFERSON EDUCATIONAL SOCIETY, 3207 STATE STREET, ERIE, PA 16508-2821

- | | | |
|---|--|--|
| <input type="checkbox"/> \$10,000 LIFETIME MEMBER | <input type="checkbox"/> \$1,000 ASSOCIATE | <input type="checkbox"/> \$100 CONTRIBUTOR |
| <input type="checkbox"/> \$5,000 PRESIDENT'S CIRCLE | <input type="checkbox"/> \$500 PATRON | <input type="checkbox"/> \$50 FRIEND |
| <input type="checkbox"/> \$2,500 BENEFACTOR | <input type="checkbox"/> \$250 SUPPORTER | <input type="checkbox"/> \$25 JEFFERSONIAN |

Name: _____

Address: _____

City: _____ State: _____ Zip: _____

Phone: _____

Email: _____

Credit Card Payment Information

Name on Card: _____ Expiration Date: _____

Credit Card #: _____ CVC: _____

Signature: _____

A membership welcome kit will be mailed to you upon receipt. Thank you for your support of JES and its mission.

JEFFERSON
EDUCATIONAL SOCIETY

3207 STATE STREET • ERIE, PA 16508-2821
WWW.JESERIE.ORG • 814.459.8000

JEFFERSON
EDUCATIONAL SOCIETY

3207 STATE STREET • ERIE, PA 16508-2821

NON-PROFIT ORG.
U.S. Postage
PAID
Permit No. 255
Erie, PA

SUPPORT YOUR LOCAL THINK TANK!

Renew your membership

Join as a new member

Gift a membership

Donate to the Jefferson

☐ Waive My Membership Benefits -
100% Tax-Deductible.

Checks may be made out to The Jefferson Educational Society.

HOW CAN YOU SUPPORT THE JEFFERSON EDUCATIONAL SOCIETY?

Donate directly to the Jefferson by calling
814.459.8000 or visiting:
<https://www.JESERIE.org/donate>

ECGRA GRANT MONEY WORKS HERE!

ecgra.org

814-897-2690



JEFFERSON
EDUCATIONAL SOCIETY

2020-2021 MEMBERSHIP



BECOME A MEMBER!

JOIN US AT THE
12TH ANNUAL
GLOBAL SUMMIT



Renew. Join. Reserve Your Tickets Now.

JEFFERSON
EDUCATIONAL SOCIETY



Over the past 11 years, the Jefferson Educational Society has invited nationally and internationally renowned speakers to present each November in Erie, Pennsylvania on their groundbreaking, bleeding-edge work. From former First Ladies of the United States to Pulitzer Prize-winning authors, from U.S. Department Secretaries to the nation's leading scientific minds, the Global Summit has remained a platform for dialogue for Erie residents to engage with innovative ideas.

In that regard, Global Summit XII remains largely the same, as some of the best and brightest in politics, the arts, and history are slated to visit northwestern Pennsylvania.

What has changed is the world in which we find ourselves. Living through the COVID-19 pandemic, the safety of our audiences, our presenters, and our team remains paramount. The Jefferson team is continuing to monitor CDC guidelines, along with guidance from state and county health departments, and once we know we can host these events safely in-person, we will announce dates to each Global Summit event.

In the meantime, to ensure you can secure your attendance to the Global Summit, the Jefferson welcomes you to reserve your tickets by signing up on our waiting list. Once dates are announced, those on the waiting list will be guaranteed attendance at any or all of the Global Summit events, and members of the Jefferson will receive priority registration.

WHY SHOULD YOU RENEW YOUR MEMBERSHIP OR BECOME A FIRST-TIME MEMBER?

In becoming a member of the Jefferson, you will join a family that supports and encourages the idea that an educated citizenry shares its ideas through public discourse and has the power to make a difference in the world.

Other benefits of becoming a member: priority registration of events; advance notice of programs and lectures; an increased number of free events available to members; invitations to special member events; and subscriptions to JES publications.

**Memberships are valid one year from date of purchase with exception of the Lifetime Membership*

JEFFERSON EDUCATIONAL SOCIETY PRESENTS: GLOBAL SUMMIT XII



Living My Dream: 50 Years as an Artist

SYNTHIA SAINT JAMES

Visual artist, author, keynote speaker, and educator.

Best known for the original cover art of the hardcover edition of Terry McMillan's book "Waiting to Exhale."

Event in partnership with Edinboro University of Pennsylvania.



The Impact of Systemic Racism in Communities of Color

CLAYOLA BROWN

Union and Civil Rights leader, Labor activist, and President of A. Phillip Randolph Institute.

Event moderated by DeWitt Walton, District 10 Council Representative for Allegheny County.



DEWITT WALTON



The New Deal to Great Society: FDR and LBJ

DORIS KEARNS GOODWIN

Pulitzer Prize-winning author, world-renowned presidential historian, and former Global Summit VIII and Global Summit X Speaker.



An Evening with Jeffrey Rosen, President of the National Constitution Center

President of the National Constitution Center and Professor at George Washington University Law School.



Cutting the Edge: The Explosion of Global Suicide and How to Stop It

ROBERT PAPE

Political Scientist from the University of Chicago, specialist in International Security Affairs, and 2020's Thomas B. Hagen Dignitas Award Winner.



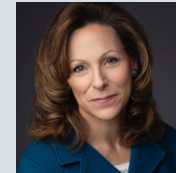
FIRST LADIES PANEL DISCUSSION

The History and Role of First Ladies

In partnership with the White House Historical Association and American University.



BARBARA PERRY, Gerald L. Baliles Professor and Director of Presidential Studies at the University of Virginia's Miller Center.



STACY CORDERY, New York Times best-selling author and professor at Iowa State University.



ANITA MCBRIDE, Executive-in-Residence at the Center for Congressional and Presidential Studies in the School of Public Affairs at American University.



Panel discussions moderated by **STEVE SCULLY**, Global Summit XII Chairman; Senior Executive Producer and Political Editor for C-SPAN.

CHIEFS OF STAFF PANEL DISCUSSION

A Conversation with Former Presidential Chiefs of Staff



ANDREW CARD

Chief of Staff for George W. Bush (2001-06). Chairman of the National Endowment for Democracy in Washington, D.C., and Interim CEO of the George & Barbara Bush Foundation



DENIS MCDONOUGH

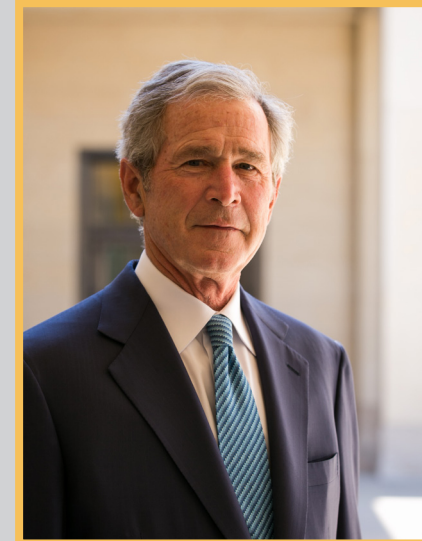
Chief of Staff for Barack Obama (2013-17). Professor of the Practice at Notre Dame University's Keough School of Global Affairs, a Partner at Macro Advisory Partners, and Senior Adviser at the Markle Foundation.



MACK MCLARTY

Chief of Staff for Bill Clinton (1993-94). Chairman and Co-Founder of McLarty Associates, Chairman of the McLarty Companies, and recipient of the Secretary of State's Distinguished Service Medal.

KEYNOTE SPEAKER



GEORGE W. BUSH

An Exclusive Conversation with George W. Bush

The 43rd President of the United States will headline the Jefferson Educational Society's Global Summit XII speaker series. President Bush will speak at Erie's Bayfront Convention Center at a date to be announced.

George W. Bush served as the 46th Governor of Texas from 1995-2000, followed by his Presidency of the United States from 2001-2009 as the 41st Commander in Chief. After his presidency, President Bush founded the George W. Bush Presidential Center in Dallas, Texas. The Bush Center is home to the George W. Bush Presidential Library and Museum and the George W. Bush Institute.

This program, moderated by C-SPAN show host **STEVE SCULLY**, will include an exclusive conversation with President Bush who will discuss the challenges facing the nation in the 21st century and the powers of freedom.



GOV. TOM RIDGE, inaugural Secretary of Homeland Security, was instrumental in organizing President Bush's event for this Global Summit. Ridge, who served two terms as Governor of Pennsylvania, will also participate in this program through a Q&A session with Steve Scully.

For updates and more information, please visit www.JESErie.org and be sure to like us on Facebook, follow us on Twitter and Instagram, and subscribe to our YouTube channel.

JEFFERSON EDUCATIONAL SOCIETY • 2020-21 MEMBERSHIP BENEFIT LEVELS

\$10,000 LIFETIME MEMBERSHIP

4 VIP Global Summit passes
4 admissions to all JES lectures and events
4 admissions to all Brock Institute lectures
Annual subscription to the *Journal of Erie Studies* and *Jefferson Essays*
Select JES publications and books

\$5,000 PRESIDENT'S CIRCLE

4 VIP Global Summit passes
4 admissions to all JES lectures and events
4 admissions to all Brock Institute lectures
Annual subscription to the *Journal of Erie Studies* and *Jefferson Essays*

\$2,500 BENEFACTOR

2 VIP Global Summit passes
4 admissions to all JES lectures and events
2 admissions to all Brock Institute lectures
Annual subscription to the *Journal of Erie Studies* and *Jefferson Essays*

\$1,000 ASSOCIATES

2 Global Summit passes
3 admissions to all JES lectures and events
2 admissions to all Brock Institute lectures
Annual subscription to the *Journal of Erie Studies* and *Jefferson Essays*

*All members will receive admission to all Member Appreciation Events during term programming

\$500 PATRON

1 Global Summit pass
1 admission to all JES lectures and events
2 admissions to all Brock Institute lectures
Annual subscription to the *Journal of Erie Studies* and *Jefferson Essays*

\$250 SUPPORTER

5 Global Summit tickets
1 admission to all JES lectures and events
1 admission to all Brock Institute lectures
Annual subscription to the *Journal of Erie Studies* and *Jefferson Essays*

\$100 CONTRIBUTOR

2 Global Summit tickets
6 JES lecture tickets
1 admission to all Brock Institute lectures
Annual subscription to the *Journal of Erie Studies* and *Jefferson Essays*

\$50 FRIEND

1 Global Summit ticket
2 JES lecture tickets

\$25 JEFFERSONIAN

2 JES lecture tickets